



Cloud PR515

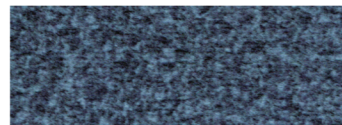


Comfort Zone™
by GOLDEN

The Cloud™ is a luxury power lift recliner offering our unique, ergonomic seating system for long-term comfort and support. It features our custom bucket seat and plush backrest. Positioning options are endless with our 5-zone positioning system, which includes our patented Twilight Technology, patented MaxiComfort® Positioning, adjustable headrest and lumbar support. Healthy benefits include being able to elevate the feet above the heart while experiencing a feeling of weightlessness. Now available in two sizes!



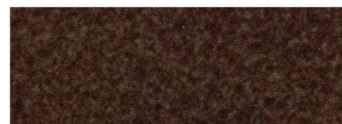
Standard Fabrics:



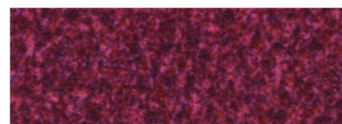
Calypso



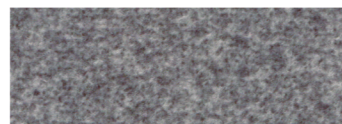
Camel



Hazelnut



Shiraz



Sterling

This fabric has a modern, updated look with rich color options. It features our exclusive SoftTouch™ with Stain Defense coating.

* An upcharge will apply for all crossover fabrics.

Standard Features:

- Patented Twilight Tilt Technology
- Patented MaxiComfort® Positioning
- Adjustable Headrest
- Adjustable Lumbar
- Programmable AutoDrive™ Hand Control
- USB Charging Port
- Extra Pocket
- SmartTek® Diagnostic System

Upgrade Options:

- Deluxe Therapeutic Heat & Vibrating Massage



HEAT WAVE
TECHNOLOGY



MAXICOMFORT® Series PR515

| | | |
|----------------------------------------------------------------|---------------|---------------|
| Model Number | PR515-SME | PR515-MLA |
| Size | Small/Med | Med/Large |
| Class II Medical Device | YES | YES |
| Weight Capacity | 375 LBS | 375 LBS |
| Positioning | Twilight | Twilight |
| Comfort Zone(s) | 5 | 5 |
| Twilight Technology | YES | YES |
| ZG+ Position | YES | YES |
| Chaise Seat | YES | YES |
| Pocketed Coil Seat | NO | NO |
| Back Type | Biscuit | Biscuit |
| Removable Back Type | Quick Release | Quick Release |
| Head Rest Cover | Standard | Standard |
| Arm Rest Covers | NO | NO |
| Overall Width | 35.5" | 39.5" |
| Overall Height | 44" | 46.5" |
| Seat Width | 23.5" | 23.5" |
| Floor to Top of Seat | 20" | 21.5" |
| Seat Depth | 18.5" | 20" |
| Seat to Top of Back | 28" | 31" |
| Seat to Top of Arm | 8" | 8.5" |
| Distance Required from Wall Reclined | 23" | 24" |
| Extension Reclined from Back of Seat to End of Foot Rest | 43" | 43" |
| Life Time Warranty, Chair Frame, Lift Frame, Recline Mechanism | YES | YES |
| Warranty on Electrical parts | 3 YR | 3 YR |
| Pro Rated Years 4 Thru 7 | YES | YES |
| Warranty on Mechanical Labor | 3 YR | 3 YR |
| Warranty on Electrical Labor | 1 YR | 1 YR |
| Hand Control Routing | Inside Pocket | Inside Pocket |
| Extra Pocket Option | Standard | Standard |
| Heat & Vibrating Massage Option | YES | YES |
| HeatWave Technology Option | YES | YES |
| Articulating Headrest Option | Standard | Standard |
| Power Adjustable Lumbar Option | Standard | Standard |
| Foot Rest Extension Option | YES | YES |
| Straight Lift Option | Standard | Standard |
| USB Charging Port | Control Box | Control Box |
| Battery Backup | Lithium ion | Lithium ion |
| SmartTek Diagnostic System | Standard | Standard |
| Place of Origin | USA | USA |

TWILIGHT

The World's Most Advanced
Power Positioning Lift Recliner
with Patented Twilight Technology!



Shown in Camel

HEALTHY BENEFITS:

- Elevates Feet Above Heart
- Supports Natural 'S' Shape of Spine
- Alleviates Pressure On Lungs
- Available in Luxurious Brisa® Fabrics With Breathable Technology
- Distributes Weight
- Relieves Pressure Points
- Encourages Proper Posture

Comfort Zone™ by GOLDEN

Comfort Zones 1 - 5 This positioning system incorporates all five adjustable comfort zones to create the ultimate wellness comfort experience with our patented Twilight Technology. Each Comfort Zone can be adjusted independently by using the exclusive AutoDrive™ hand control.



WE PATENTED COMFORT™



Scan with your smartphone camera to learn more about Comfort Zone by Golden.

Affordable Medical Equipment
Phone: 803-926-1493
www.affordablemedicalusa.com

Find us on Facebook

www.facebook.com/AffordableMedicalUSA

PROUDLY MADE
BY AMERICANS
with Domestic & Imported Materials

Literature is current at time of printing. Golden Technologies reserves the right to make changes to the product or literature at any time.

Sizes may vary depending on fabric, filling material, upholstery and carpet thickness. All measurements taken on concrete floor using levels and metal rulers.



Complies with
UL 73 and
CSA C22.2 No. 68